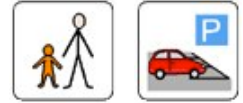


Arthog Bog

Arthog Bog is an area supported by the RSPB that is rich in a variety of bird life. The walk itself is short, but is pretty and birdwatchers will find plenty to look out for. You could use the visit as part of a tour that takes in Cymer Abbey and Dolgellau.

Access:

From the A493 between Fairbourne and Arthog take the small side road to Morfa Mawddach station.



If driving towards Dolgellau:

Shortly after passing the Arthog road sign you will see a sign indicating a road to the left. This is marked to Morfa Mawddach Station. Park in the Station car park.

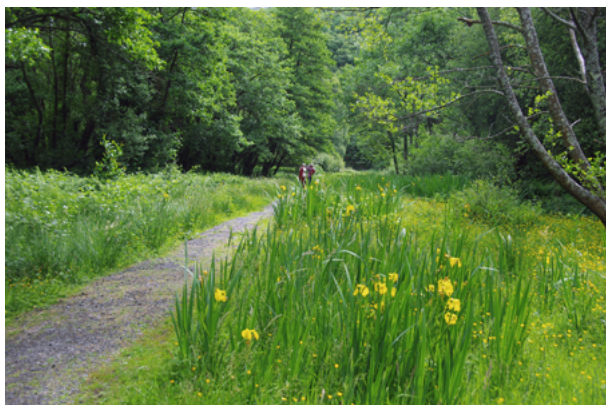
If driving towards Tywyn: You need to turn right at the sign to Morfa Mawddach station.

From the park leave on the waymarked Mawddach trail away from the bridge. After a short distance take the path right into Arthog Bog.



The Mawddach trail from the station park. Turn right off this path into the bog.

The path through the bog in early spring. There is much more vegetation in the summer.



The bog in summer with masses of irises and buttercups.